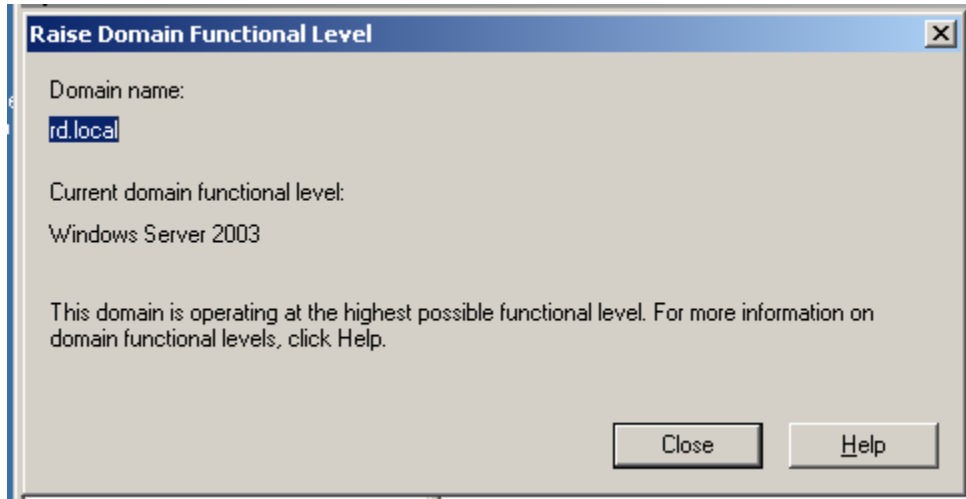
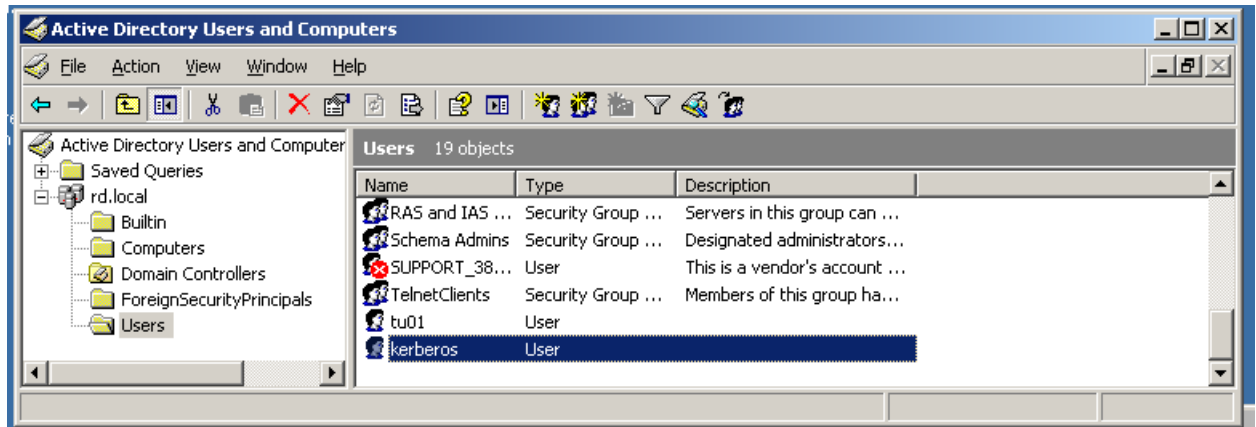


1. Domain Controller

- Make sure that the functional level of domain is "**Windows Server 2003**".



- Create a service account (regular domain user account) to be used for authentication between resources.



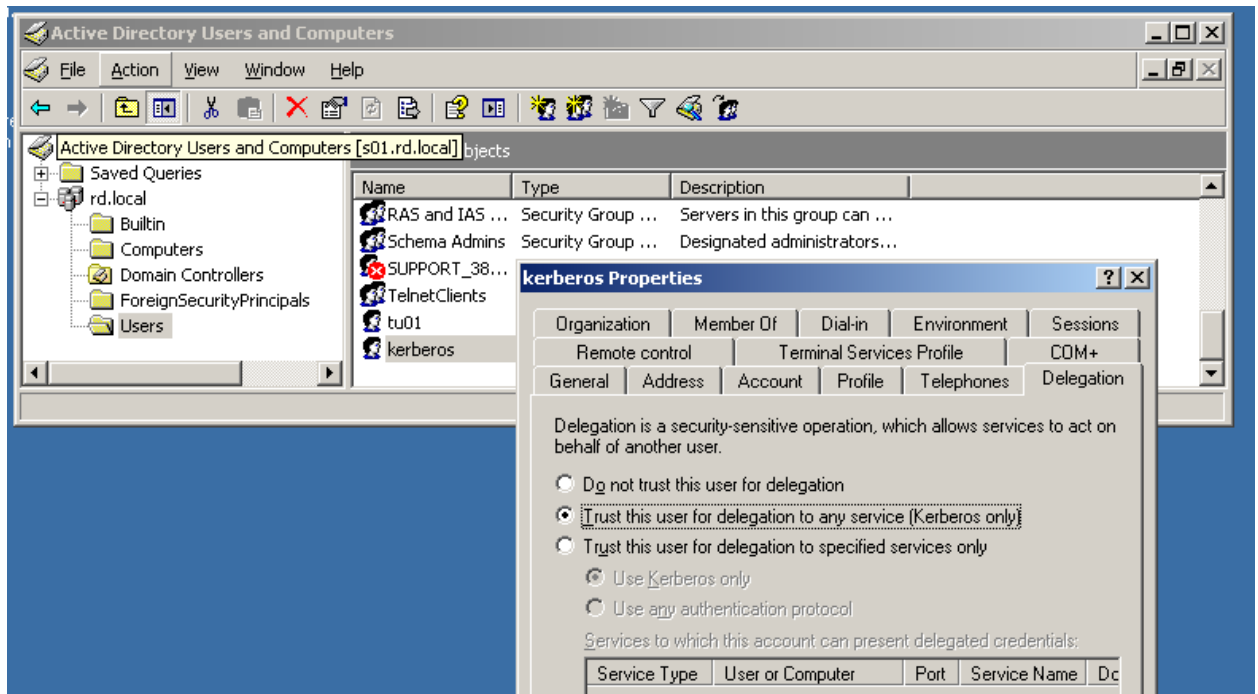
- Register the SSAS and IIS SPN (Service Principal Name) for this service account. In the load balancing scenario, you do not have to set SPNs for individual IIS servers; however, you do need to set the SPN for the load balancer.
 - `setspn -a http/nlb.rd.local rd\kerberos`
 - `setspn -a http/nlb rd\kerberos (optional)`
 - `setspn -a MSOLAPSvc.3 rd\kerberos`

```

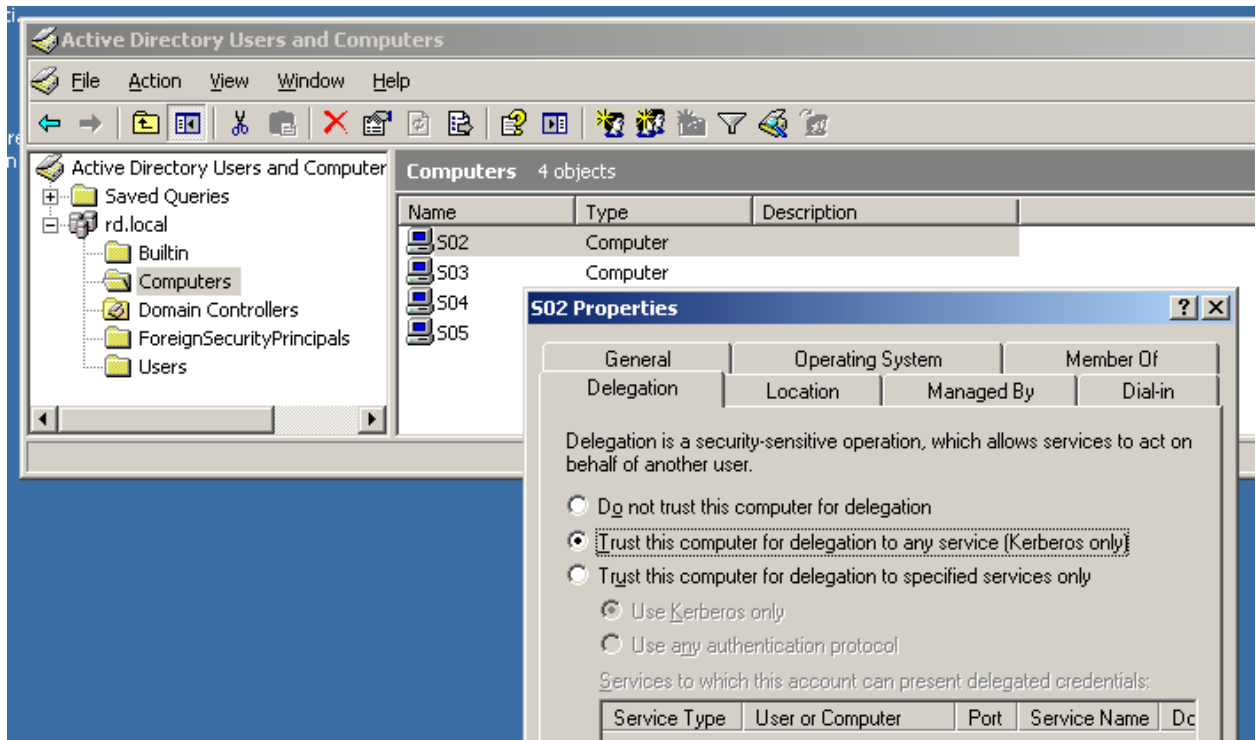
C:\WINDOWS\system32\cmd.exe
Microsoft Windows [Version 5.2.3790]
(C) Copyright 1985-2003 Microsoft Corp.

C:\Documents and Settings\Administrator>setspn -l rd\kerberos
Registered ServicePrincipalNames for CN=kerberos,CN=Users,DC=rd,DC=local:
MSOLAPSvc.3/s04.rd.local
http/nlb.rd.local
http/nlb
  
```

- We can now trust this service account for delegation. Make sure that either the "Trust this user for delegation to any service (Kerberos Only)" option or the "Trust this user for delegation to specified services only" option is selected. The first option is the more generic option and is best to use when implementing for the first time.

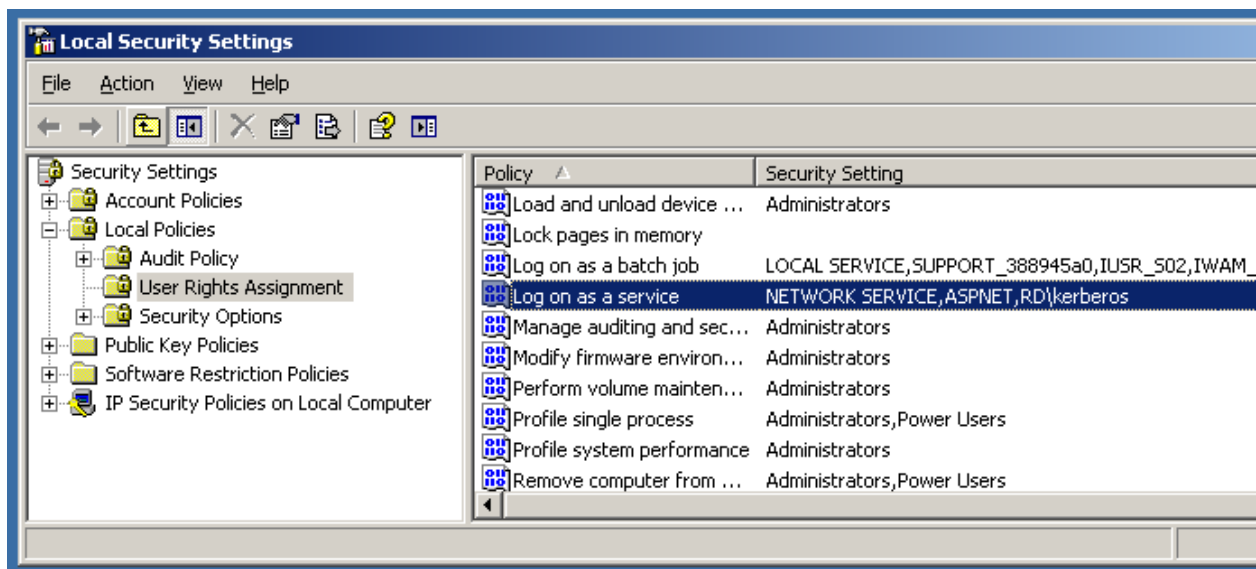


- Trust all the IIS computers for delegation.

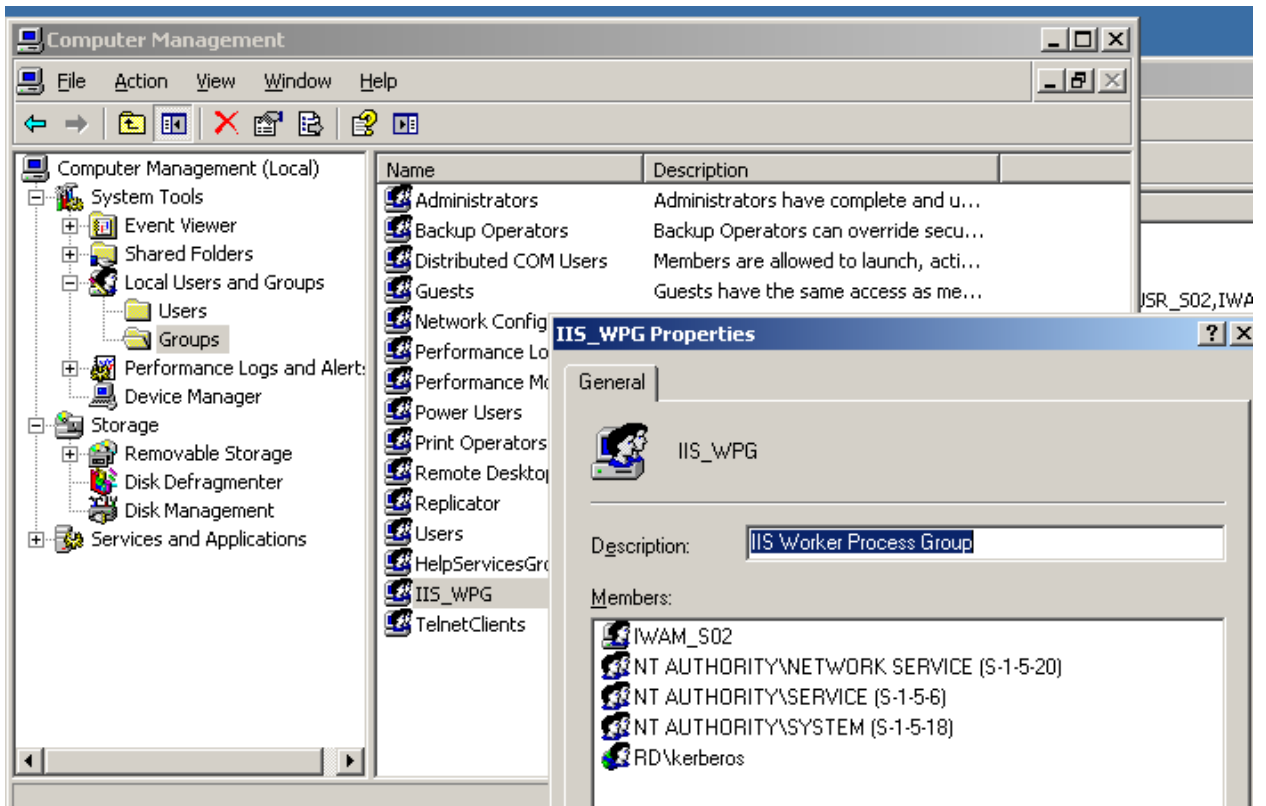


2. IIS boxes

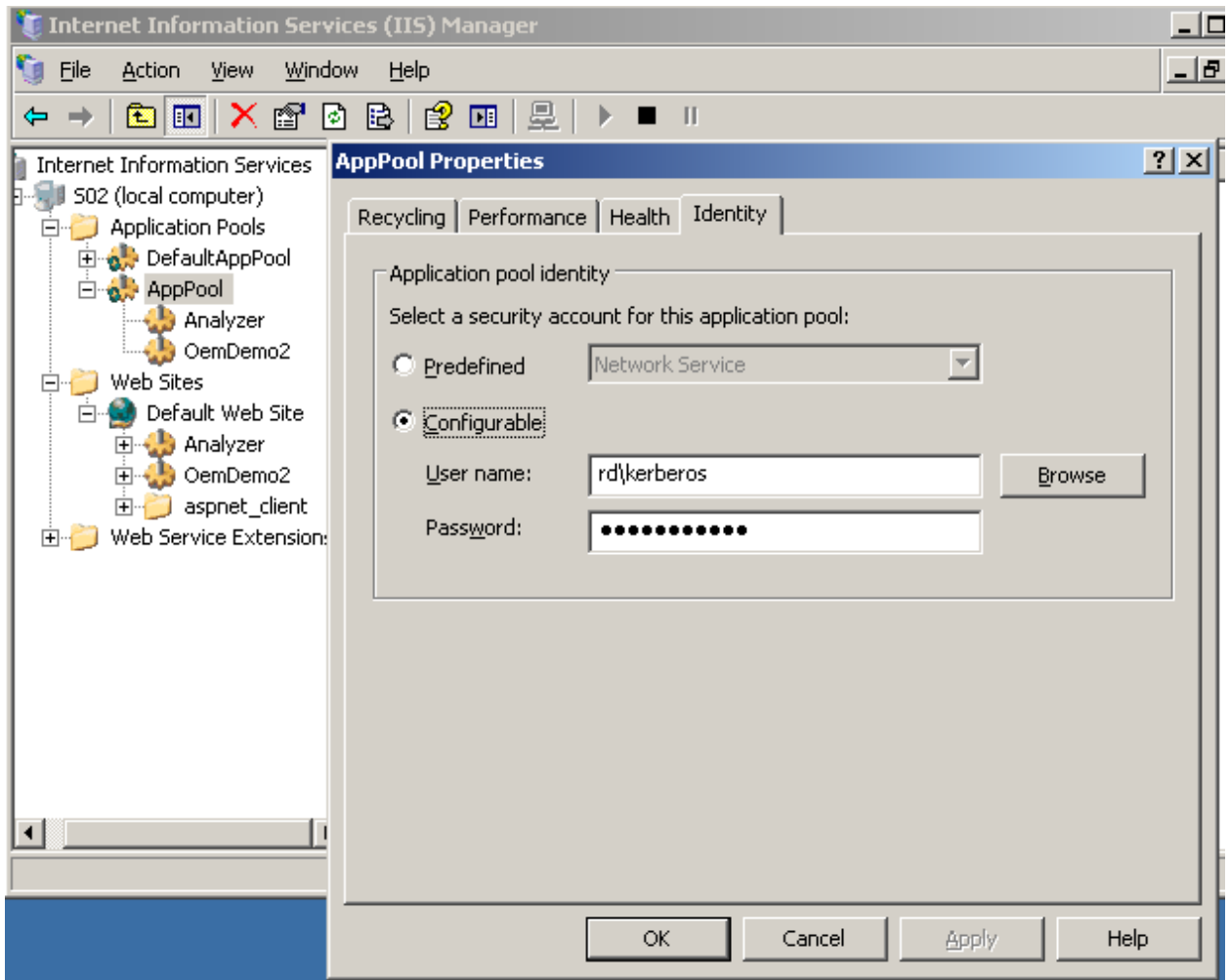
- First, grant the service account the "Log on as a service" right, which is found under "Local Policies" → "User Rights Assignment".



- Add the service account to the local group **IIS_WPG** (IIS Worker Process Group).



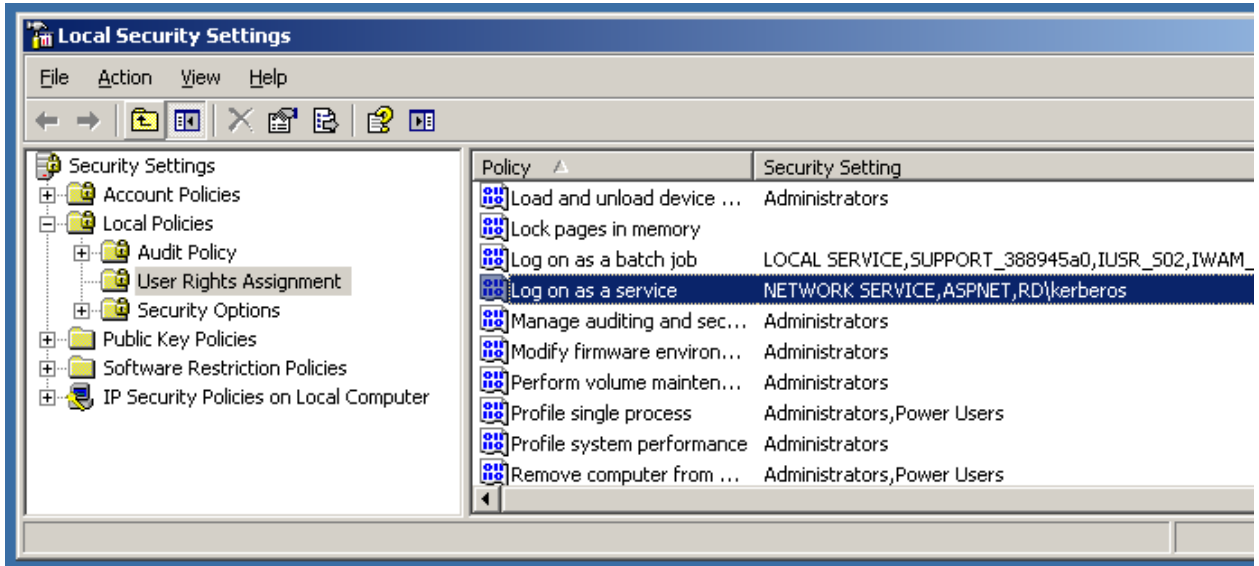
- Change the **Application Pool Identity** from "Network Service" to the service account.



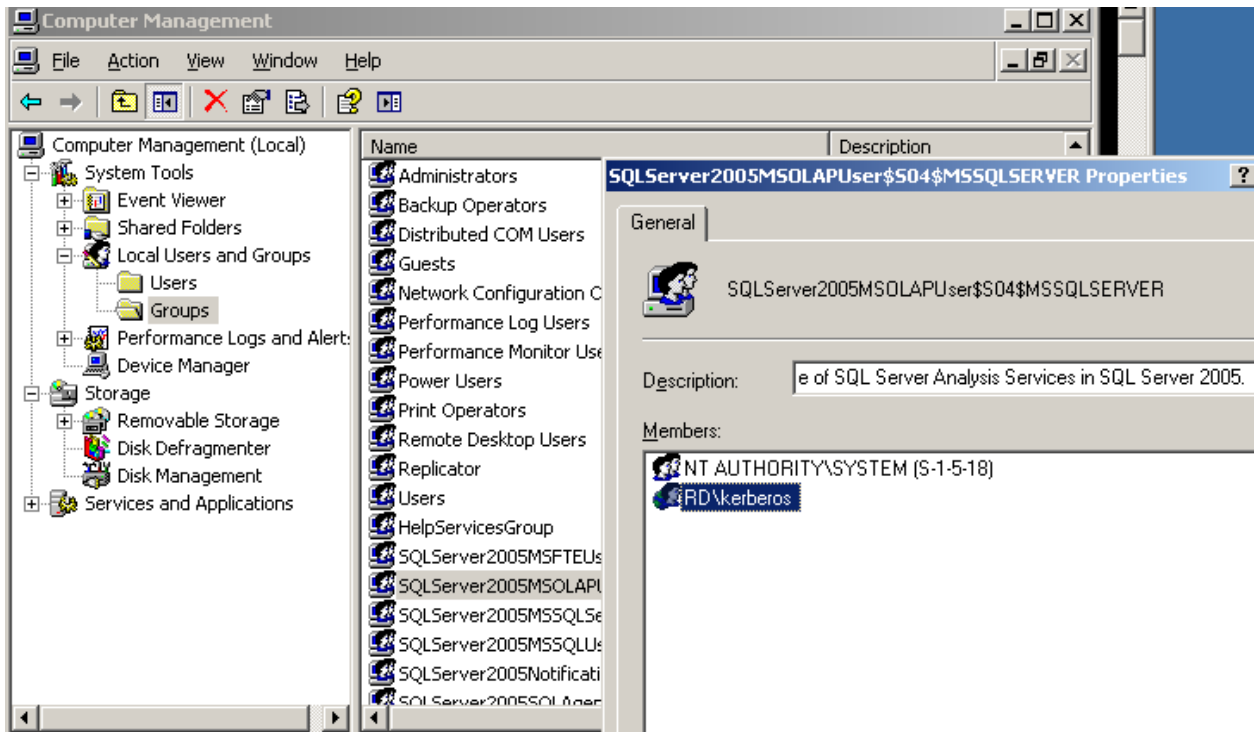
- Do not forget to restart the IIS after completing the steps above.

3. Analysis Services

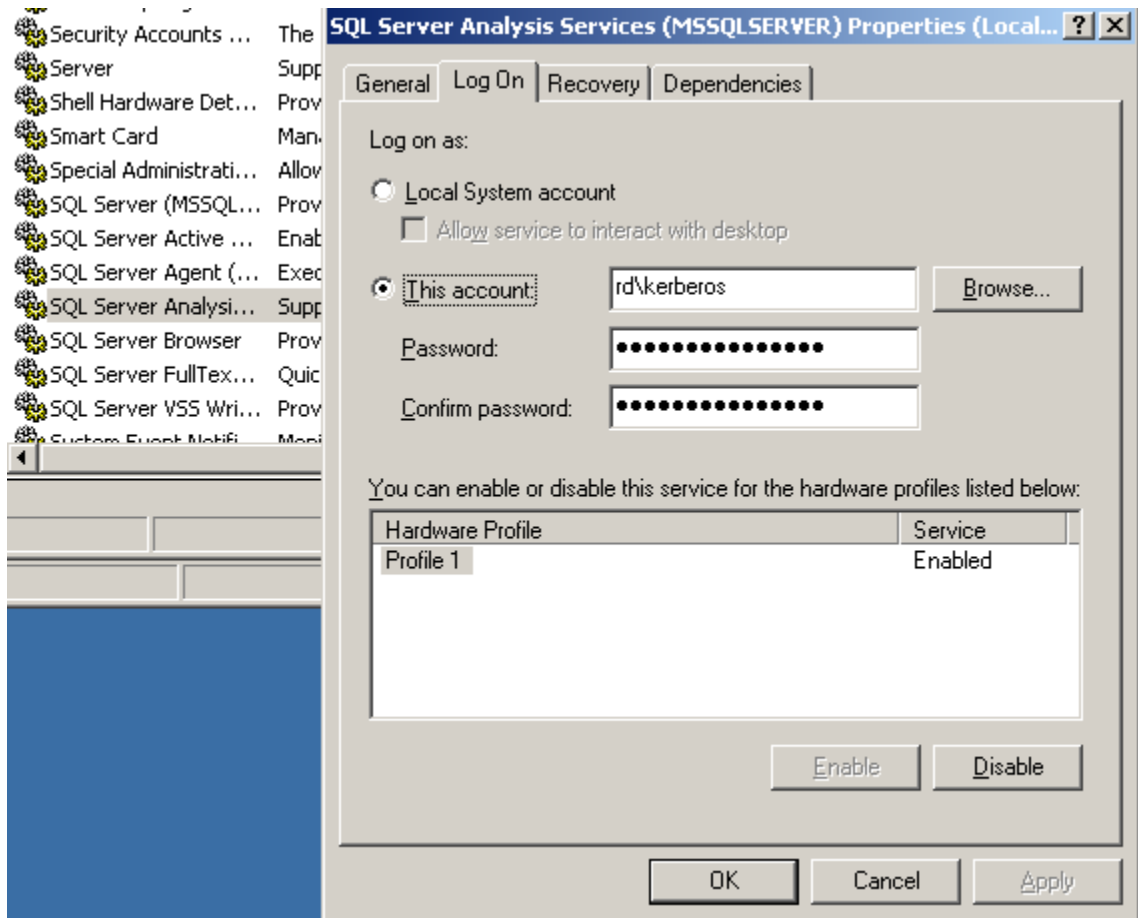
- First, grant the service account the **"Log on as a service"** right, which is found under **"Local Policies"** → **"User Rights Assignment"**.



- Add the service account to the local group **SQLServer2005MSOLAPUser\$...**



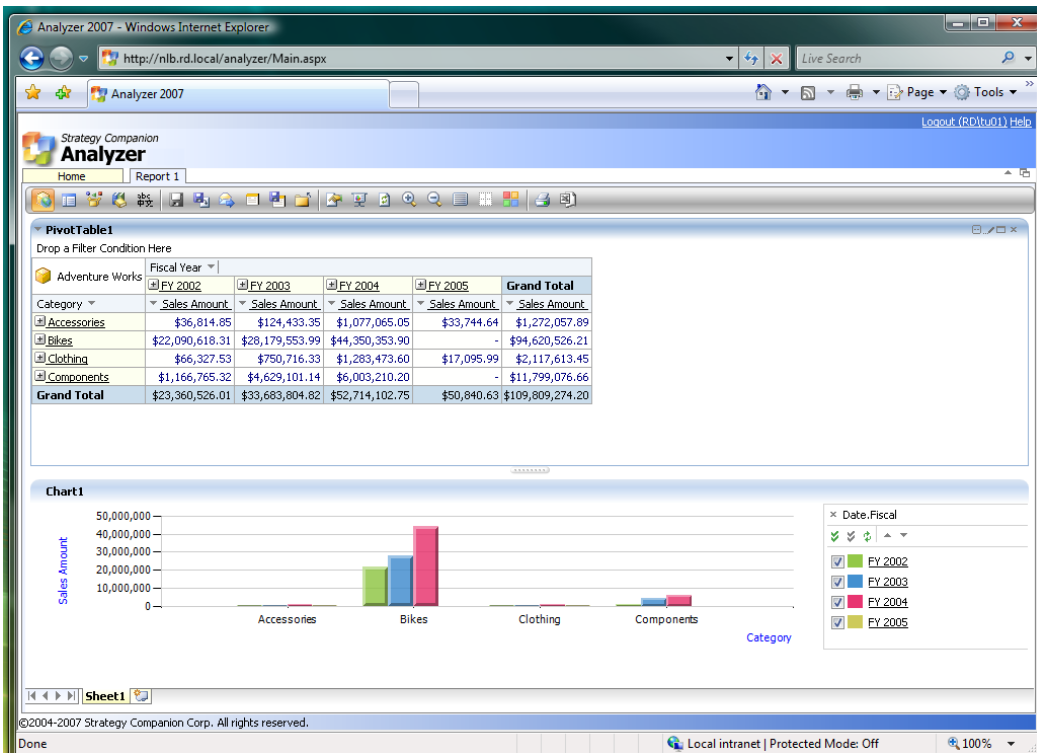
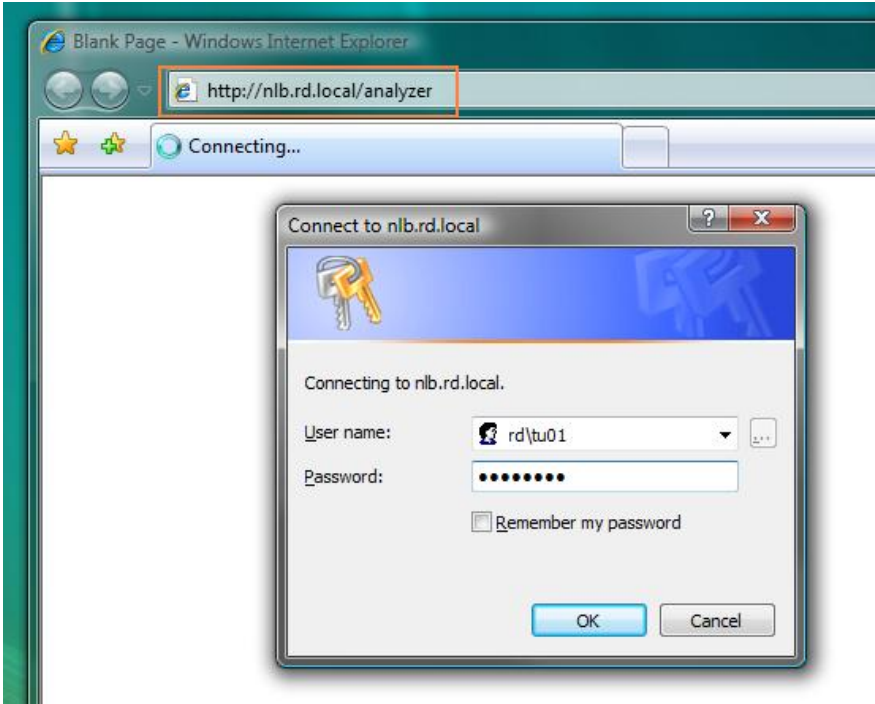
- Change the **Log On Identity** from "Local System Account" to the service account.



- Restart the "SQL Server Analysis Services" service.

4. Test

- Use a domain user account to log on to Analyzer from a client browser.



- Verify the **Security Event Logs** on both the **IIS** and the **SSAS** boxes. You should see something similar to the images below:

