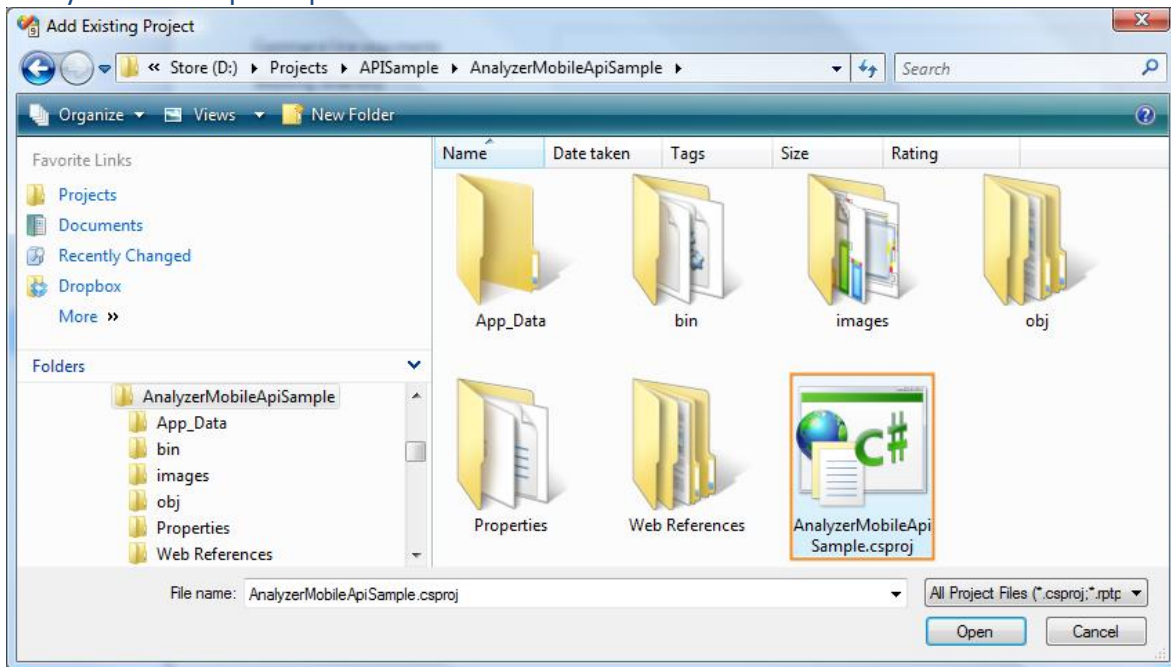


Analyzer Mobile API Sample Project

Configure AnalyzerMobileApiSample Project

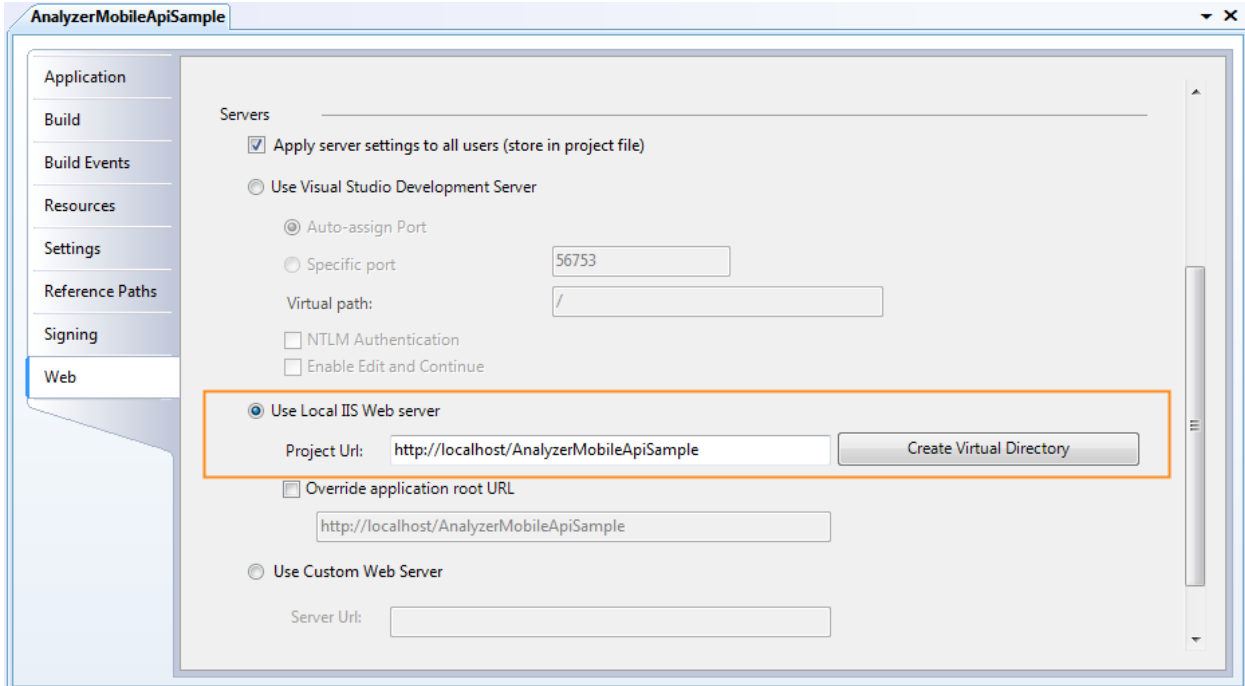
1. Adding the AnalyzerMobileApiSample Project

Decompress the AnalyzerMobileApiSample_vs2008. Open a Visual Studio solution or create a new solution, select Add Existing Project, add AnalyzerMobileApiSample.csproj in the AnalyzerMobileApiSample folder.



2. Create Sample Project Virtual Directory in IIS

Open project properties page, select **Use Local IIS Web server**, click **Create Virtual Directory** button.



3. Configure Analyzer Mobile Location

Open sample project's *Web.config* file, add the following key to <appSettings> section:

```
<add key="AnalyzerMobileUrl" value="http://mobile/AnalyzerMobile"/>
```

Modify the value to match your environment (URL should point to the location of the AnalyzerMobile website). Please do not use localhost/analyzermobile as the URL even if the Analyzer Mobile site is located on the same server as the sample project (please use IP address or the name of the server).



Configure Analyzer Mobile

1. Enable API

Open *Web.config* file under the Analyzer Mobile directory (default is C:\program files\AnalyzerMobile\web.config)

At the end of the between `</system.web>` and `</configuration>`, add the following code, no modification required.

```
<location path="services/AnalyzerMobile.asmx">
  <system.web>
    <authorization>
      <allow users="*" />
    </authorization>
  </system.web>
</location>
```



2. Configure Custom Error Handling Page

Open *system.config* under \Program Files\AnalyzerMobile\configs. Please add the following at the end of the page between `</Authentication>` and `</Configuration>`. Please change the URL to point to the location of your AnalyzerMobileApiSample.

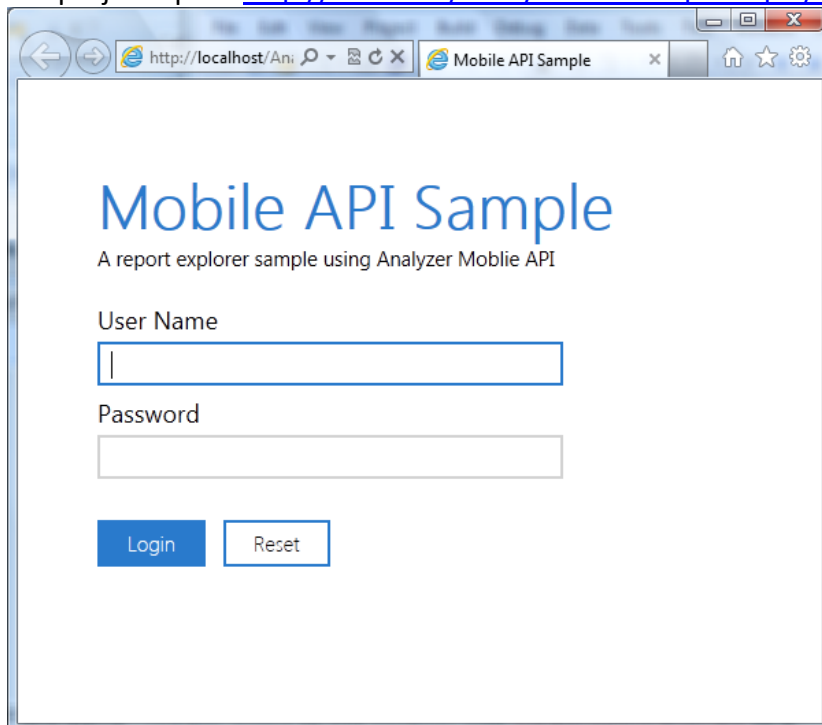
```
<OEMClient>
  <ReportErrorPage>http://sample/AnalyzerMobileApiSample/ReportErrorCH.aspx</ReportErrorPage>
  <SessionExpiredPage>http://sample/AnalyzerMobileApiSample/SessionExpiredCH.aspx</SessionExpiredPage>
</OEMClient>
```

```
system.config*
<?xml version="1.0" encoding="utf-8"?>
<Configuration>
  <Server>
    <Protocol>http</Protocol>
    <Address>192.168.1.57</Address>
    <Instance>Analyzer</Instance>
    <DefaultDomain></DefaultDomain>
    <Authentication>Basic</Authentication>
  </Server>
  <Authentication>
    <Adapter>Default</Adapter>
  </Authentication>
  <DEMClient>
    <ReportErrorPage>http://sample/AnalyzerMobileApiSample/ReportErrorCH.aspx</ReportErrorPage>
    <SessionExpiredPage>http://sample/AnalyzerMobileApiSample/SessionExpiredCH.aspx</SessionExpiredPage>
  </DEMClient>
</Configuration>
```

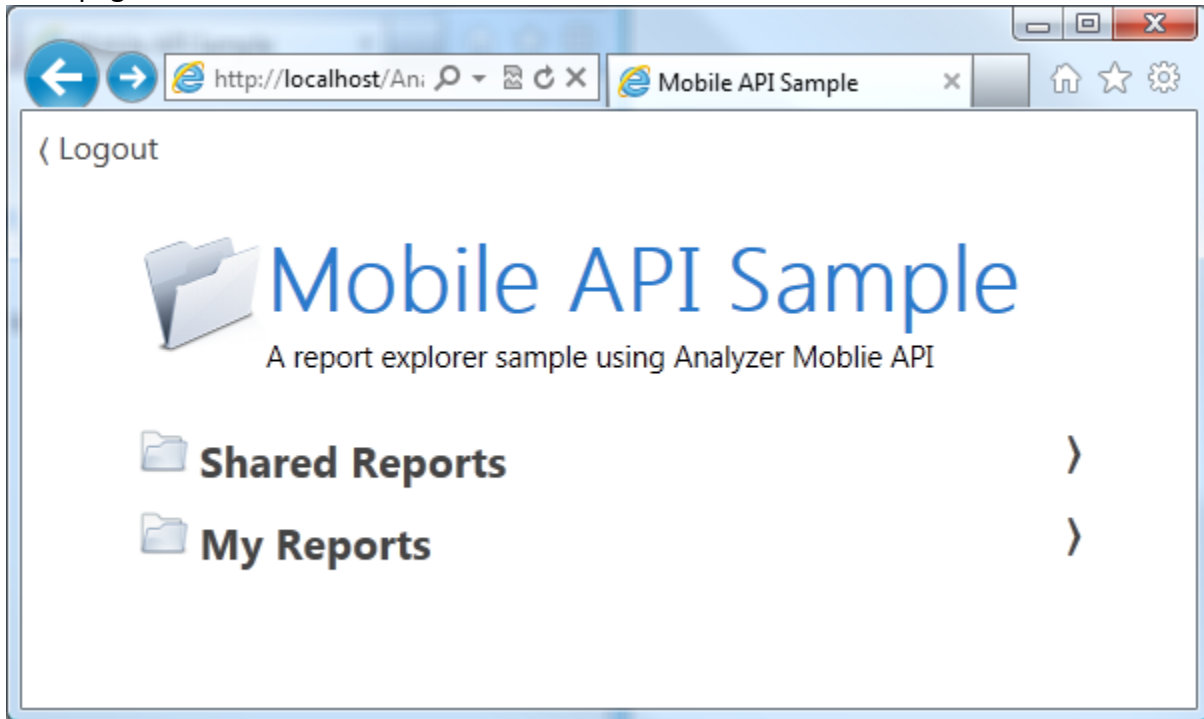
Once enabled, Analyzer Mobile will pass the exception to AnalyzerMobileApiSample to handle the exception. ReportErrorCH.aspx of AnalyzerMobileApiSample handles general report handling errors. SessionExpiredCH.aspx of AnalyzerMobileApiSample handles Analyzer Mobile session expired error.

Running the Sample Project

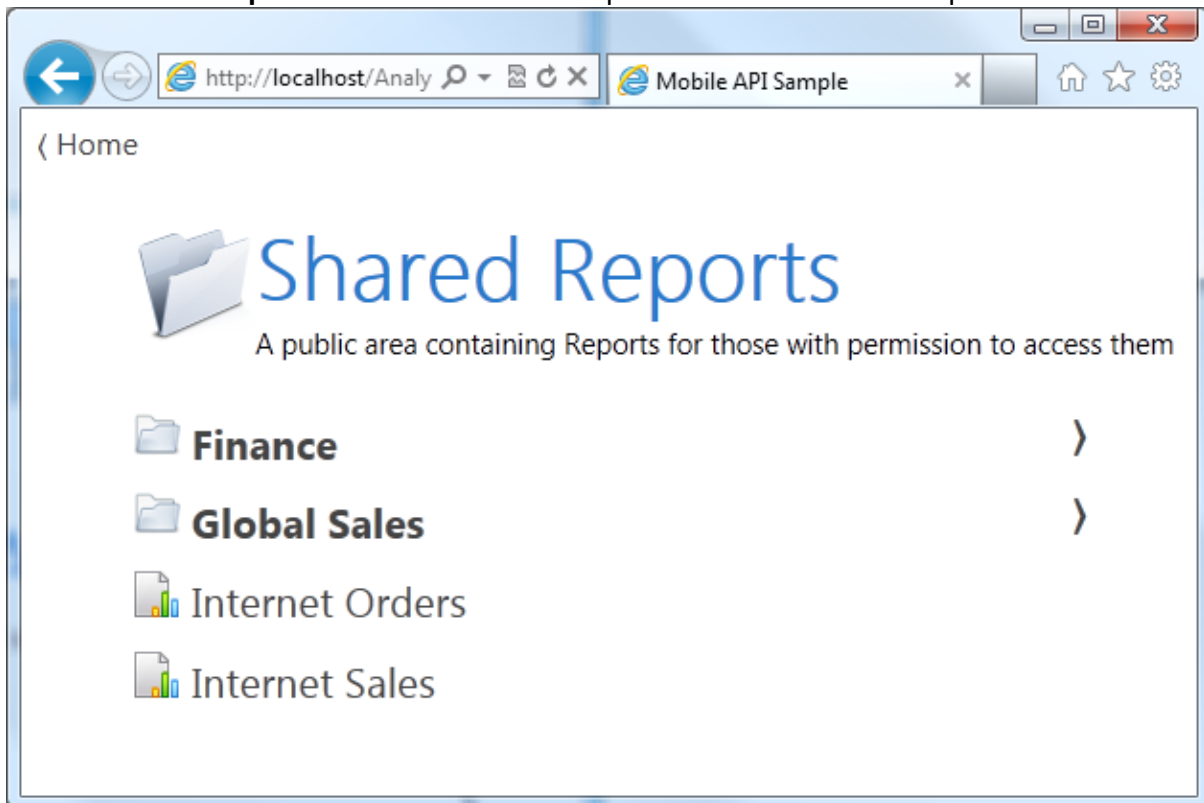
Build AnalyzerMobileApiSample project by pressing **F5** or select **Build** from the menu. Execute the project opens <http://localhost/AnalyzerMobileApiSample/Login.aspx>



Enter user name and password of an account that belongs to the Mobile User role to enter the main page.



Click on **Shared Reports** reveals folders and reports under the Shared Reports folder.



Click on a report opens the report.

