

Strategy Companion Install and Kerberos Configuration

1. Pre-Requisites

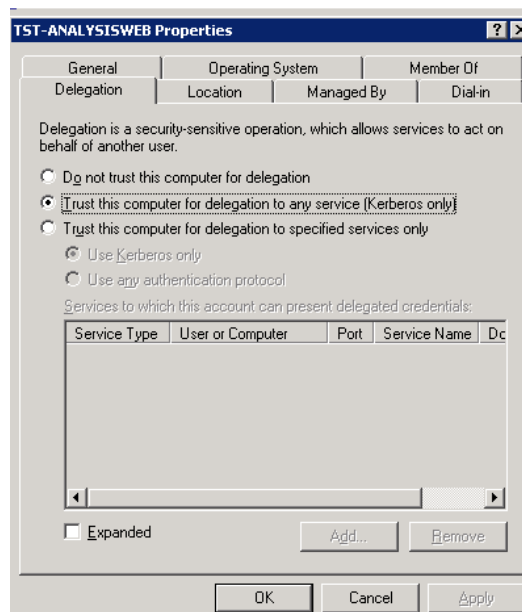
The following assumptions are made through the remainder of the document:

- SQL Analysis Services 2005 is running under a DOMAIN USER account.
- IIS Application Pool will run under the default NETWORK SERVICE account (machine account)

2. Enable delegation on IIS machine account and SSAS domain account

For both the SSAS service account and the IIS machine account:

- Find the user/computer in Active Directory Users & Computers
- Right-click, properties
- Delegation Tab-> Trust this computer for delegation.



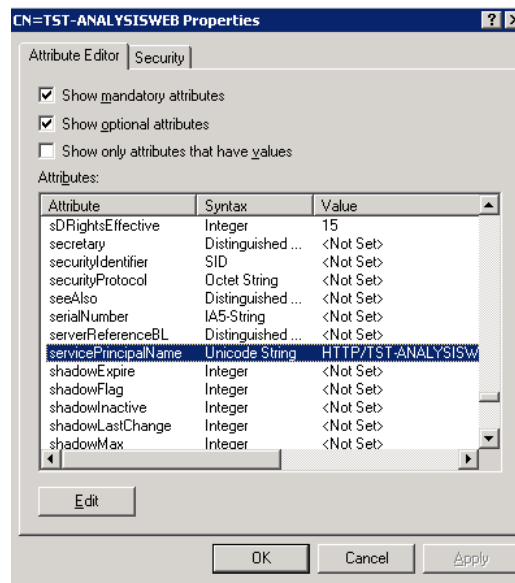
3. Register SPN Names on IIS machine account and SSAS domain account

The Service Principal Name attribute needs to be updated for the SSAS service account and the IIS machine account. Every domain suffix that will be used to access the machine must be included in the list. Use **ADSIEdit** to update the servicePrincipalName attribute as described below.

- IIS Machine Account set servicePrincipalName to
 - HOST/[netbios machine name]
 - HOST/[fully qualified machine name suffix1]
 - HOST/[fully qualified domain name suffix 2]
 - **HTTP**/[netbios machine name]
 - **HTTP**/[fully qualified machine name suffix1]
 - **HTTP**/[fully qualified domain name suffix 2]
- SSAS Domain Account servicePrincipalName to
 - **MSOLAPSvc.3**/[netbios machine name]
 - **MSOLAPSvc.3**/[fully qualified machine name suffix1]

NOTE: IF SSAS is running as a named instance, append a colon and the instance name to each **MSOLAPSvc.3**/[netbios machine name]:[instance name]. Additional info:

<http://support.microsoft.com/kb/917409/>



4. Install SSAS components and test Kerberos on IIS Server.

Install the **Microsoft SQL Server 2005 Analysis Services 9.0 OLE DB Provider** on the IIS Server.

- Install the MS OLAP OLE DB Client: **SQLServer2005_ASOLEDB9_x64.msi**
- Anywhere on the server, create a blank document named **TEST.UDL**, then **double -click it**
 - Provider
 - Analysis Services 9.0
 - All
 - Set SSPI to = **Kerberos**
 - Advanced
 - Impersonation Level = **Delegate**
 - Connection
 - 1. Data Source = FQDN of SSAS Server
 - 2. Use Windows NT Integrated Security
 - 3. Initial Catalog = Select Cube Database
 - **PRESS TEST = “Test succeed but some settings were not accepted” OK.**

